



Office Refreshments and Cleaning Consumables

☎ 031 301 2393

📞 083 449 2794

✉ sales@orcc.co.za

🌐 www.orccofficesupplies.co.za

VAT number: 4710249618 | VAT registration: 2008/179208/23

192 Lilian Ngoyi Road, Morningside, Durban, 4001

INDEX

≡ VENEERS AND LAMINATES	3	≡ RECEPTION SEATING	
≡ VENEER DESKING		PICAR	37
VOLANTÉ	4-5	TAZO	37
PALAZZO	6	FRANCO	38
GRANDO	7	BRUNO	38
MAESTRO	7	RENI	39
EROS	8-9	ALDO	39
NIRO	10-11	COSMO	39
NEVARO	12	≡ EXECUTIVE CHAIRS	
VISTA	13	BELLAGIO	40
DOLCÉ	14-15	ASSARO	41
CUBÉ	16	AMORE WOOD	42
DELLA	17	AMORE PU	43
VERSI	18-19	ALTRO WOOD	44
MONTÉ	20	ALTRO PU	45
BRAVO	21	STRADA WOOD	46
≡ LAMINATE DESKING		STRADA PU	47
VITO	22	FOSCO WOOD	48
OPERA	23	FOSCO PU	49
TETRA	24-25	CIELO	50
SOLO32	26-27	NOBILE	50
PRONTO16	28	EXPRESSI	51
≡ RECEPTION COUNTERS		≡ MANAGERIAL CHAIRS	
ZERO	29	TARGA	52
PRISM	30	AQUA STACKER	52
ZIONNE	31	DONNA	53
LANCIA	32	CETTO	54
≡ COFFEE TABLES	33	UNO	55
≡ BOARDROOM TABLES	34-35	≡ OPERATOR CHAIRS	
≡ SERVERS	36	TORSO	56
		FITTO	57
		GIO	58
		≡ FABRIC SWATCHES	59



Office Refreshments and Cleaning Consumables

☎ 031 301 2393 📞 083 449 2794 ✉ sales@orcc.co.za 🌐 www.orccofficesupplies.co.za

VAT number: 4710249618 | VAT registration: 2008/179208/23
192 Lilian Ngoyi Road, Morningside, Durban, 4001

FABRIC SWATCHES



CONTRACT BLACK



CONTRACT MIDNIGHT



CONTRACT MARINE BLUE



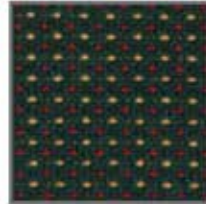
CONTRACT FRENCH NAVY



CONTRACT LAPIS LAZULI



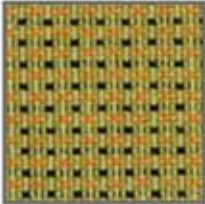
CONTRACT ORBIT



CONTRACT ALPINE



CONTRACT GREEN



CONTRACT QUINCE



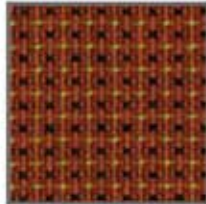
CONTRACT LIME



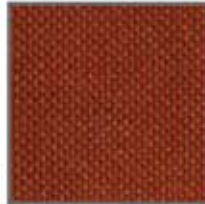
CONTRACT VELVET



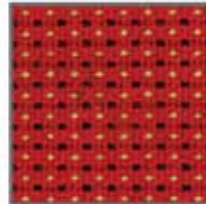
CONTRACT BURGUNDY



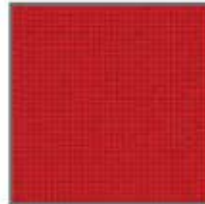
CONTRACT KIWI



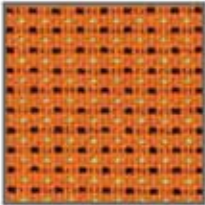
CONTRACT GINGER



CONTRACT STRAWBERRY



CONTRACT RED



CONTRACT FLAME



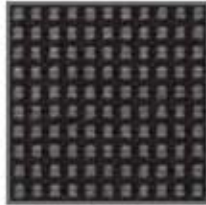
CONTRACT ORANGE



OPTIONS BLACK



OPTIONS ROYAL BLUE



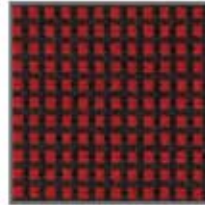
OPTIONS STEEL



OPTIONS CEDAR GREEN



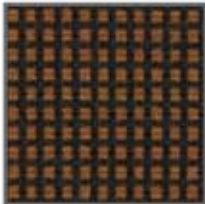
OPTIONS PLUM



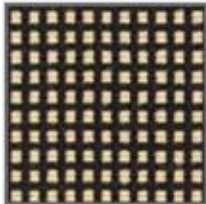
OPTIONS PIMENTO



OPTIONS RUST



OPTIONS HONEYBEAR



OPTIONS OAK



VIBE BLACK



VIBE NAVY



VIBE ELECTRIC BLUE



VIBE TAPESTRY RED



VIBE POSTBOX RED



VIBE FUDGE



CHECK LAGOON



CHECK WINE



CHECK LIMESTONE



APOLLO ELECTRIC BLUE



APOLLO RED



APOLLO LIME



APOLLO BROWN

GIO

OPERATOR CHAIRS

- A. GIO001: GIO TYPIST CHAIR
- B. GIO002: GIO DRAUGHTSMAN CHAIR



OPERATOR CHAIRS

A. FITC001: FITTO HIGH BACK OPERATORS CHAIR

B. FITC002: FITTO MEDIUM BACK OPERATORS CHAIR

C. FITC003: FITTO HIGH BACK DRAUGHTSMAN CHAIR

D. FITC004: FITTO MEDIUM BACK DRAUGHTSMAN CHAIR



TORSO

OPERATOR CHAIRS

- A. TORC001: TORSO
HIGH BACK
OPERATORS
SYNCR0 MECHANISM
- B. TORC002: TORSO
MEDIUM BACK
OPERATORS
SYNCR0 MECHANISM



MANAGERIAL CHAIRS

- A. UN0C001: UNO HIGH BACK
- B. UN0C002: UNO LOW BACK
- C. UN0C003: UNO VISITORS ARM CHAIR
- D. UN0C004: UNO VISITORS SIDE CHAIR
- E. RI0C001: RICKSTACKER CHAIR



GETTO

MANAGERIAL CHAIRS

- A. GETC001: CETTO HIGH BACK
- B. GETC002: CETTO LOW BACK
- C. GETC003: CETTO VISITORS ARM CHAIR
- D. GETC004: CETTO VISITORS SIDE CHAIR



MANAGERIAL CHAIRS

- A. DONC001: DONNA HIGH BACK**
- B. DONC002: DONNA LOW BACK**
- C. DONC003: DONNA VISITORS ARM CHAIR**
- D. DONC004: DONNA VISITORS SIDE CHAIR**



TARGA

MANAGERIAL CHAIRS

- A. TARCO01: TARGA HIGH BACK
- B. TARCO02: TARGA MEDIUM BACK
- C. TARCO03: TARGA VISITORS ARM CHAIR



AQUA STACKERS

CHAIRS

- D. AQUCO01: AQUA ARM CHAIR
- E. AQUCO02: AQUA SIDE CHAIR



EXECUTIVE CHAIRS

- A. EXPC001: EXPRESSI HIGH BACK
- B. EXPC002: EXPRESSI MEDIUM BACK
- C. EXPC003: EXPRESSI VISITORS ARM CHAIR



CIELO

EXECUTIVE CHAIRS

- A. CIEC001: CIELO HIGH BACK
- B. CIEC002: CIELO VISITORS ARM CHAIR



NOBILE

EXECUTIVE CHAIRS

- C. NOBC001: NOBILE HIGH BACK
- D. NOBC002: NOBILE MEDIUM BACK
- E. NOBC003: NOBILE VISITORS ARM CHAIR



FOSCO PU

EXECUTIVE CHAIRS

- A. FOPC001: FOSCO PU HIGH BACK
- B. FOPC002: FOSCO PU MEDIUM BACK
- C. FOPC003: FOSCO PU VISITORS ARM CHAIR



FOSCO WOOD

EXECUTIVE CHAIRS

- A. FOWC001: FOSCO WOOD HIGH BACK
- B. FOWC002: FOSCO WOOD MEDIUM BACK
- C. FOWC003: FOSCO WOOD VISITORS ARM CHAIR



STRADA PU

EXECUTIVE CHAIRS

- A. STPC001: STRADA PU HIGH BACK
- B. STPC002: STRADA PU MEDIUM BACK
- C. STPC003: STRADA PU VISITORS ARM CHAIR



STRADA WOOD

EXECUTIVE CHAIRS

- A. STWC001: STRADA WOOD HIGH BACK
- B. STWC002: STRADA WOOD MEDIUM BACK
- C. STWC003: STRADA WOOD VISITORS ARM CHAIR



ALTRO PU

EXECUTIVE CHAIRS

A. ALPC001: AMORE PU
HIGH BACK

B. ALPC002: AMORE PU
MEDIUM BACK

C. ALPC003: AMORE PU
VISITORS ARM CHAIR



ALTRO WOOD

EXECUTIVE CHAIRS

- A. ALWC001: ALTRO WOOD HIGH BACK
- B. ALWC002: ALTRO WOOD MEDIUM BACK
- C. ALWC003: ALTRO WOOD VISITORS ARM CHAIR



AMORE PU

EXECUTIVE CHAIRS

A. AMPC001: AMORE PU
HIGH BACK

B. AMPC002: AMORE PU
MEDIUM BACK

C. AMPC003: AMORE PU
VISITORS ARM CHAIR



AMORE WOOD

EXECUTIVE CHAIRS

- A. AMWC001: AMORE WOOD HIGH BACK
- B. AMWC002: AMORE WOOD MEDIUM BACK
- C. AMWC003: AMORE WOOD VISITORS ARM CHAIR



EXECUTIVE CHAIRS

- A. ASWC001: ASSARO HIGH BACK
- B. ASWC002: ASSARO MEDIUM BACK
- C. ASWC003: ASSARO VISITORS ARM CHAIR
- D. ASPC004: ASSARO PU HIGH BACK
- E. ASPC005: ASSARO PU MEDIUM BACK
- F. ASPC006: ASSARO PU VISITORS ARM CHAIR



BELLAGIO

EXECUTIVE CHAIRS

A. BELC001: BELLAGIO
HIGH BACK

B. BELC002: BELLAGIO
MEDIUM BACK

C. BELC003: BELLAGIO
VISITORS ARM CHAIR



RECEPTION SEATING

E. RENI

E1. RENR001: RENI SINGLE

E2. RENR002: RENI DOUBLE

F. ALDO

F1. ALDR001: ALDO SINGLE

F2. ALDR002: ALDO DOUBLE

G. COSMO

G1. COSR001: COSMO SINGLE

G2. COSR002: COSMO DOUBLE



RECEPTION SEATING

C. FRANCO

C1. FRAR001: FRANCO SINGLE

C2. FRAR002: FRANCO DOUBLE

D. BRUNO

D1. BRUR001: BRUNO SINGLE

D2. BRUR002: BRUNO DOUBLE



RECEPTION SEATING



A. PICAR

- A1. PICR001: PICAR SINGLE
- A2. PICR002: PICAR DOUBLE

B. TAZO

- B1. TAZR001: TAZO SINGLE
- B2. TAZR002: TAZO DOUBLE



SERVERS

A. DISCO

DIS5001: MOBILE SERVER UNIT TO ACCOMMODATE 130L BAR FRIDGE WITH SERVING COUNTER.

B. RICCO

RIC5001: 2 DOOR / 4 DRAW SERVER UNIT TO ACCOMMODATE 130L BAR FRIDGE



A



B





65



67



610

E. BRAVO (CONTINUED)

- E15. BRAB019: 4000 X 1400 RECTANGULAR WITH PANEL LEGS 12 SEATER
- E16. BRAB020: 4000 X 1400 BARREL WITH PANEL LEGS 12 SEATER
- E17. BRAB021: 4000 X 1400 OVAL WITH PANEL LEGS 12 SEATER

F. BRAVO MODULAR

- F1. BRAB022: 1600 1/2 ROUND
- F2. BRAB023: 1400 1/2 ROUND
- F3. BRAB024: 1600 X 800 / 700
- F4. BRAB025: 1800 X 800 / 700
- F5. BRAB026: 2100 X 800 / 700
- F6. BRAB027: 800 / 700 X 800 / 700 1/4 ROUND

G. SOLO 32

- 32MM FLAT EDGE LAMINATE.
- G1. SOL8009: 1200 ROUND
 - G2. SOL8010: 1500 ROUND
 - G3. SOL8011: 1800 X 1200 RECTANGULAR
 - G4. SOL8012: 1800 X 1200 BARREL
 - G5. SOL8013: 2400 X 1200 RECTANGULAR
 - G6. SOL8014: 2400 X 1200 BARREL
 - G7. SOL8015: 2400 X 1200 OVAL



61

D. VISTA

- 32MM X 3MM FLAT EDGE ON DISC BASE.
- D1. VIS8001: 1200 ROUND
 - D2. VIS8002: 1500 ROUND
 - D3. VIS8003: 2400 X 1200 RECTANGULAR 8 SEATER
 - D4. VIS8004: 2400 X 1200 BARREL 8 SEATER
 - D5. VIS8005: 2400 X 1200 OVAL 8 SEATER
 - D6. VIS8006: 3200 X 1200 RECTANGULAR 10 SEATER
 - D7. VIS8007: 3200 X 1200 BARREL 10 SEATER
 - D8. VIS8008: 3200 X 1200 OVAL 10 SEATER

E. BRAVO

- 32MM X 3MM FLAT EDGE.
- E1. BRAB005: 1200 ROUND BARREL BASE 4 SEATER
 - E2. BRAB006: 1350 HEXAGON BARREL BASE 6 SEATER
 - E3. BRAB007: 1500 ROUND BARREL BASE 6 SEATER
 - E4. BRAB008: 1500 HEXAGON BARREL BASE 6 SEATER
 - E5. BRAB009: 1800 ROUND BARREL BASE 8 SEATER
 - E6. BRAB010: 1800 OCTAGON BARREL BASE 8 SEATER
 - E7. BRAB011: 1800 X 1200 RECTANGULAR WITH PANEL LEGS 6 SEATER
 - E8. BRAB012: 1800 X 1200 BARREL WITH PANEL LEGS 6 SEATER
 - E9. BRAB013: 2400 X 1200 RECTANGULAR WITH PANEL LEGS 8 SEATER
 - E10. BRAB014: 2400 X 1200 BARREL WITH PANEL LEGS 8 SEATER
 - E11. BRAB015: 2400 X 1200 OVAL WITH PANEL LEGS 8 SEATER
 - E12. BRAB016: 3200 X 1200 RECTANGULAR WITH PANEL LEGS 10 SEATER
 - E13. BRAB017: 3200 X 1200 BARREL WITH PANEL LEGS 10 SEATER
 - E14. BRAB018: 3200 X 1200 OVAL WITH PANEL LEGS 10 SEATER

BOARDROOM

A. VOLANTE

50MM GROOVED EDGE / OPTION 32MM X 50MM SOLID BEVEL EDGE ON DOME BASE.

- A1. VOL8001: 1200 ROUND 4 SEATER
- A2. VOL8002: 1500 ROUND 6 SEATER
- A3. VOL8003: 2400 X 1200 RECTANGULAR 8 SEATER
- A4. VOL8004: 2400 X 1200 BARREL 8 SEATER
- A5. VOL8005: 3200 X 1200 RECTANGULAR 10 SEATER
- A6. VOL8006: 3200 X 1200 BARREL 10 SEATER
- A7. VOL8007: 4000 X 1400 BARREL 12 - 14 SEATER



A1

B. PALAZZO

32MM X 50MM SOLID BEVEL EDGE / OPTION 3MM FLAT EDGE ON SILVER CAPPED LEGS.

- B1. PAL8001: 2400 X 1200 ELIPTICAL 6 - 8 SEATER
- B2. PAL8002: 3200 X 1400 ELIPTICAL 8 - 10 SEATER
- B3. PAL8003: 4000 X 1400 ELIPTICAL 8 - 12 SEATER



B1

C. EROS

32MM X 3MM FLAT EDGE WITH BLACK 16MM, UNDERCARRIAGE ON DOME BASE.

- C1. ERO8001: 1200 ROUND 4 SEATER
- C2. ERO8002: 1500 ROUND: 6 SEATER
- C3. ERO8003: 2400 X 1200 RECTANGULAR 8 SEATER
- C4. ERO8004: 2400 X 1200 BARREL 8 SEATER
- C5. ERO8005: 3200 X 1200 RECTANGULAR 10 SEATER
- C6. ERO8006: 3200 X 1200 BARREL 10 SEATER
- C7. ERO8007: 4000 X 1400 BARREL 12 - 14 SEATER



C1



C4

COFFEE TABLES



A1



B2



D2



E2



C6



C1



F4



F2

A. ZOO
A1. ZOOC001: 600 X 600
A2. ZOOC002: 900 X 600
A3. ZOOC003: 1200 X 600
B. VELO
B1. VELC001: 600 X 600
B2. VELC002: 900 X 600
B3. VELC003: 1200 X 600
C. TUSCANY
C1. TUSC001: 600 X 600
C2. TUSC002: 600 X 600 GLASS TOP
C3. TUSC003: 900 X 600
C4. TUSC004: 900 X 600 GLASS TOP
C5. TUSC005: 1200 X 600
C6. TUSC006: 1200 X 600 GLASS TOP
D. ROSSI
D1. ROSC001: 600 X 600
D2. ROSC002: 900 X 600
D3. ROSC003: 1200 X 600
E. PICASSO
E1. PICC001: 900 X 600
E2. PICC002: 1200 X 600
F. CASSA
F1. CASC001: 450 X 450
F2. CASC002: 600 X 600
F3. CASC003: 900 X 600
F4. CASC004: 1200 X 600

LANGIA RECEPTION COUNTER

RECEPTION COUNTERS

A. LANR001: 2200 X 1800

B. LANR002: 1800 X 1800

PEDESTALS

C. LANF001: 3 DRAW FITTED

D. LANM001: 3 DRAW MOBILE PEDESTAL



AVAILABLE IN 32MM BUMPER EDGE WITH RAISERS



A



D



DESK

- A. ZI00001: 1800 X 800 DOUBLE PEDESTAL
- B. ZI00002: 1600 X 800 DOUBLE PEDESTAL
- C. ZI00003: MODESTY

CREDENZAS

- D. ZI00001: 1000 X 600
- E. ZI00002: 900 X 450

SYSTEM CUPBOARDS

- F. ZI00001: 1500 X 1200 ROLLER DOOR
- G. ZI00002: 1500 X 900 HINGE DOOR
- H. ZI00003: 1800 X 900 HINGE DOOR
- I. SHELD001: SHELF
- J. PULL001: PULL OUT CRADLE

FILING CABINETS

- K. ZI00001: 4 DRAW
- L. ZI00002: 3 DRAW
- M. ZI00003: 2 DRAW

RECEPTION COUNTERS LAMINATE

- N. ZI00001: 1800 X 800 DOUBLE PEDESTAL
- O. ZI00002: 2200 X 800 DOUBLE PEDESTAL
- P. ZI00003: 2500 X 800 DOUBLE PEDESTAL

PRISM RECEPTION COUNTER

AVAILABLE IN 32MM 1/2 ROUND SOLID EDGE TOP & 50MM 1/2 ROUND SOLID EDGE LEGS / OPTIONAL STAINLESS STEEL KICKPLATE

RECEPTION COUNTERS

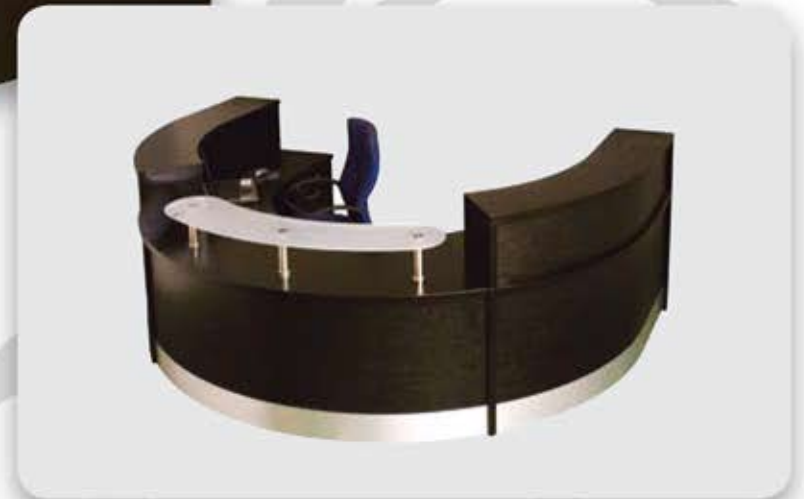
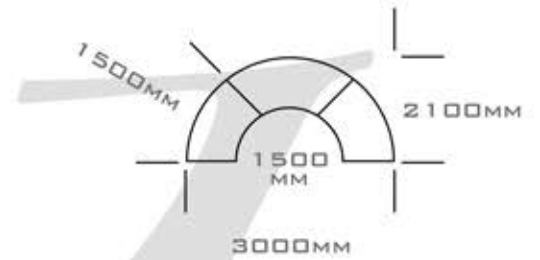
- A. PRI001: 2100 X 800 RECEPTION DESK
- B. PRI002: 1200 X 600 PEDENZA
- C. PRI003: 3 DRAW MOBILE PEDESTAL
- D. PRI004: 1000 X 600 SLIDING DOOR CREDENZA
- E. PRI005: 1200 X 600 ROLLER DOOR CREDENZA
- F. PRI006: 1200 X 600 OPEN EXTENSION



ZERO RECEPTION COUNTER

RECEPTION COUNTERS

ZERRO01: 3000 X 2100 ROUND COUNTER UNIT WITH DESK HEIGHT PEDESTALS



PRONTO 16

AVAILABLE IN 16MM X 1MM IMPACT EDGE.

DESK SHELLS

A. PRO0001: 1500 X 750

B. PRO0002: 1200 X 750

PEDESTALS

C. PROF001: 3 DRAW FITTED

D. PROF002: 2 DRAW FITTED

E. PROF003: 1 DRAW FITTED

F. PROF004: 1 DRAW 1 DEEP FILER FITTED

LINKS

G. PROL001: 750 X 750

H. PROL002: 750 X 600

I. PROL003: 750 X 450

EXTENSIONS

J. PROE001: 900 X 450 OPEN EXTENSION

K. PROE002: 900 X 600 OPEN EXTENSION

CREDENZAS

L. PROCC001: 900 X 600 SLIDING DOOR

M. PROCC002: 900 X 450 SLIDING DOOR

BOOKCASES - OPEN

N. PROB001: 2 TIER

O. PROB002: 3 TIER

P. PROB003: 4 TIER

Q. PROB004: 5 TIER

SYSTEM CUPBOARDS

R. PROS001: 1500 X 900 HINGE DOOR

S. PROS002: 1800 X 900 HINGE DOOR

T. SHEL001: SHELF

U. PULL001: PULL OUT CRADLE

FILING CABINETS

V. PROF005: 4 DRAW

W. PROF006: 3 DRAW

X. PROF007: 2 DRAW





AS



AT



AI



AV

BOOKCASES - OPEN

- X. SOLB001: 2 TIER
- Y. SOLB002: 3 TIER
- Z. SOLB003: 4 TIER
- AA. SOLB004: 5 TIER

HINGE DOOR

- AB. SOLB005: 3 TIER
- AC. SOLB006: 4 TIER

GLASS HINGE DOOR

- AD. SOLB007: 3 TIER
- AF. SOLB008: 4 TIER

SYSTEM CUPBOARDS

- AG. SOLS001: 1500 X 1200 ROLLER DOOR
- AH. SOLS002: 1500 X 1000 ROLLER DOOR
- AI. SOLS003: 1500 X 900 HINGE DOOR
- AJ. SOLS004: 1800 X 900 HINGE DOOR
- AK. SHEL001: SHELF
- AL. PULL001: PULL OUT CRADLE

FILING CABINETS

- AM. SOLF003: 4 DRAW
- AN. SOLF004: 3 DRAW
- AO. SOLF005: 2 DRAW

BOARDROOM TABLES

- AP. SOLB009: 1200 ROUND
- AQ. SOLB010: 1500 ROUND
- AR. SOLB011: 1800 X 1200 RECTANGULAR
- AS. SOLB012: 1800 X 1200 BARREL
- AT. SOLB013: 2400 X 1200 RECTANGULAR
- AU. SOLB014: 2400 X 1200 BARREL
- AV. SOLB015: 2400 X 1200 OVAL

SOLO 32

AVAILABLE IN 32MM X 3MM IMPACT EDGE

DESK SHELLS

- A. SOLD001: 1800 X 800
- B. SOLD002: 1600 X 800
- C. SOLD003: 1200 X 800

PEDESTALS

- D. SOLF001: 3 DRAW FITTED PEDESTAL
- E. SOLF002: 1 DRAW 1 DEEP FILER FITTED PEDESTAL
- F. SOLM001: 3 DRAW MOBILE PEDESTAL
- G. SOLM002: 1 DRAW 1 DEEP FILER MOBILE PEDESTAL
- H. SOLD004: 4 DRAW DESK HEIGHT PEDESTAL
- I. SOLD005: 2 DRAW 1 DEEP FILER DESK HEIGHT PEDESTAL

LINKS

- J. SOLL001: 800 X 800
- K. SOLL002: 800 X 600
- L. SOLL003: 800 X 450

EXTENSIONS

- M. SOLE001: 1200 X 600 CPU EXTENSION
- N. SOLE002: 900 X 600 OPEN EXTENSION
- O. SOLE003: 900 X 450 OPEN EXTENSION

CREDENZAS

- P. SOLC001: 1200 X 600 ROLLER DOOR
- Q. SOLC002: 1000 X 600 ROLLER DOOR
- R. SOLC003: 900 X 600 SLIDING DOOR
- S. SOLC004: 900 X 450 SLIDING DOOR
- T. SOLC005: 1500 X 450 SLIDING DOOR
- U. SOLC006: 1800 X 450 SLIDING DOOR

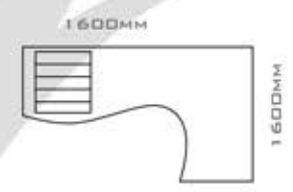
PEDENZAS

- V. SOLP001: 1200 X 600 ROLLER DOOR
- W. SOLP002: 1200 X 600 SLIDING DOOR



AVAILABLE IN 32MM X 3MM IMPACT EDGE WITH POLE LEGS OR PANEL LEGS & MODESTIES.

CREDENZA
N. TETC001: 1000 X 600 SLIDING DOOR
O. TETC002: 1000 X 600 ROLLER DOOR
SYSTEM CUPBOARDS
P. TETS001: 1500 X 1200 ROLLER DOOR
Q. TETS002: 1500 X 900 HINGE DOOR
R. TETS003: 1800 X 900 HINGE DOOR
S. SHEL001: SHELF
T. PULL001: PULL OUT CRADLE
FILING CABINETS
U. TETFD01: 4 DRAW
V. TETFD02: 3 DRAW
W. TETFD03: 2 DRAW
CLUSTER DESK SCREENS
X. SCRC001: 1800 x 600
Y. SCRC002: 1600 x 600
Z. SCRC003: 1200 x 600



TETRA

AVAILABLE IN 32MM X 3MM IMPACT EDGE WITH POLE LEGS OR PANEL LEGS & MODESTIES.

DESKS WITH POLE LEGS

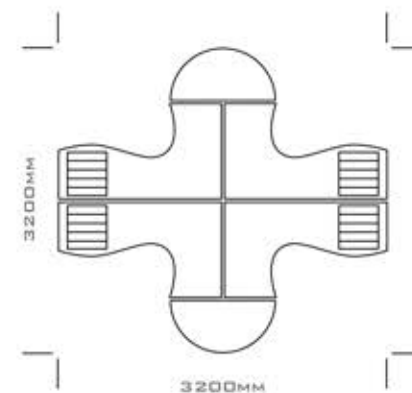
- A. TETD001: 1800 X 800 / 1200 X 600
- B. TETD002: 1600 X 800 / 1200 X 600
- C. TETD003: 1600 X 600 / 1600 X 600
- D. TETD004: 1200 X 600 1/2 ROUND BOOKCASE
- E. TETD005: 500 X 600 PEDESTAL TOP

DESKS WITH PANEL LEGS & MODESTIES

- F. TETD006: 1800 X 800 / 1200 X 600
- G. TETD007: 1600 X 800 / 1200 X 600
- H. TETD008: 1600 X 600 / 1600 X 600
- D. TETD004: 1200 X 600 1/2 ROUND BOOKCASE
- E. TETD005: 500 X 600 PEDESTAL TOP

PEDESTALS

- I. TETD009: 4 DRAW + PIN TRAY DESK HEIGHT PEDESTAL CENTRAL LOCKING NO TOP
- J. TETD010: 2 DRAW 1 DEEP FILER + PIN TRAY DESK HEIGHT PEDESTAL CENTRAL LOCKING NO TOP
- K. TETD011: 1 DRAW CPU PEDESTAL
- L. TETM001: 2 DRAW 1 DEEP FILER MOBILE PEDESTAL
- M. TETM002: 3 DRAW MOBILE PEDESTAL





PIGEON HOLE UNITS

- Y. OPEP003: 15 COMPARTMENT
1500 X 900 X 350
- Z. OPEP004: 30 COMPARTMENT
1500 X 900 X 350
- AA. OPEP005: 15 COMPARTMENT
1800 X 900 X 350
- AB. OPEP006: 30 COMPARTMENT
1800 X 900 X 350

FILING CABINETS

- AC. OPEF003: 4 DRAW
- AD. OPEF004: 3 DRAW
- AE. OPEF005: 2 DRAW

DESK SHELLS

- A. OPEDD01: 2100 X 750 / 1000 X 650
WITH BUILT IN D END
- B. OPEDD02: 1800 X 750 / 1000 X 650
STRAIGHT END
- C. OPEDD03: 1600 X 750 / 1000 X 650
STRAIGHT END
- D. OPEDD04: 1800 X 650 / 1600 X 650
STRAIGHT END

PEDESTALS

- E. OPEPD01: 4 DRAW 1 DEEP FILER DESK
HEIGHT PEDESTAL NO TOP
- F. OPEPD02: 2 DRAW 1 DEEP FILER DESK
HEIGHT PEDESTAL NO TOP
- G. OPEPD03: 2 DRAW DAY FILER
- H. OPEMD01: 3 DRAW MOBILE PEDESTAL
- I. OPEMD02: 1 DRAW 1 DEEP FILER
MOBILE PEDESTAL
- J. OPEFD01: 3 DRAW FITTED PEDESTAL
- K. OPEFD02: 1 DRAW 1 DEEP FILER FITTED
PEDESTAL

EXTENSIONS

- L. OPEED01: 600 X 650
- M. OPEED02: 800 X 650
- N. OPEED03: 1000 X 650

CREDENZAS

- O. OPECD01: 1000 X 650 SLIDING DOOR
- P. OPECD02: 1000 X 650 ROLLER DOOR

PEDENZAS

- R. OPEPD01: 1200 X 650 SLIDING DOOR
- S. OPEPD02: 1200 X 650 ROLLER DOOR

SYSTEM CUPBOARDS

- T. OPES001: 1500 X 1200 ROLLER DOOR
- U. OPES002: 1500 X 900 HINGE DOOR
- V. OPES003: 1800 X 900 HINGE DOOR
- W. SHELO01: SHELF
- X. PULL001: PULL OUT CRADLE

VITO

AVAILABLE IN 32MM X 3MM IMPACT EDGE

DESKS

- A. VITD001: 2000 X 1000 SHELL
- B. VITD002: 1800 X 1000 SHELL
- C. VITD003: 1450 X 1000 CONFERENCE LINK

EXTENSION 1900 X 600

- D. VITE001: OPEN EXTENSION
- E. VITE002: WITH DESK HEIGHT PEDESTAL
- F. VITE003: WITH ROLLER DOOR CREDENZA
- G. VITE004: WITH ROLLER DOOR PEDENZA
- H. VITE005: WITH SLIDING DOOR CREDENZA
- I. VITE006: WITH SLIDING DOOR PEDENZA

MOBILE PEDESTALS

- J. VITM001: 3 DRAW + PIN TRAY CENTRAL LOCKING
- K. VITM002: 2 DRAW 1 DEEP FILER + PIN TRAY CENTRAL LOCKING

CREDENZAS

- L. VITC001: 1200 X 600 ROLLER DOOR
- M. VITC002: 1000 X 600 SLIDING DOOR

PEDENZAS

- N. VITP001: 1250 X 600 ROLLER DOOR
- O. VITP002: 1250 X 600 SLIDING DOOR

SYSTEM CUPBOARDS

- P. VITS001: 1500 X 1200 ROLLER DOOR
- Q. VITS002: 1500 X 900 HINGE DOOR
- R. VITS003: 1800 X 900 HINGE DOOR
- S. SHEL001: SHELF
- T. PULL001: PULL OUT CRADLE

FILING CABINETS

- U. VITF001: 4 DRAW
- V. VITF002: 3 DRAW
- W. VITF003: 2 DRAW





DESKS

- A. BRAD001: 1800 X 1000 BOW DOUBLE PEDESTAL
- B. BRAD002: 1800 X 900 DOUBLE PEDESTAL
- C. BRAD003: 1600 X 900 DOUBLE PEDESTAL
- D. BRAD004: 1800 X 900 SINGLE PEDESTAL
- E. BRAD005: 1500 X 900 SINGLE PEDESTAL
- F. BRAD006: 1200 X 900 SINGLE PEDESTAL
- G. BRAD007: BLOTTER INLAY

LINKS

- H. BRAL001: 900 X 600 LINK
- I. BRAL002: 900 X 450 LINK

EXTENSIONS

- J. BRAE001: 1200 X 600 CPU EXTENSION
- K. BRAE002: 1000 X 600 OPEN EXTENSION
- L. BRAE003: 900 X 450 OPEN EXTENSION

CREDENZAS

- M. BRAC001: 900 X 450 SLIDING DOOR
- N. BRAC002: 1000 X 600 SLIDING DOOR
- O. BRAC003: 1500 X 500 SLIDING DOOR
- P. BRAC004: 1800 X 500 SLIDING DOOR

BOOK CASES

- Q. BRAB001: 3 TIER GLASS HINGE DOOR
- R. BRAB002: 3 TIER HINGE DOOR
- S. BRAB003: 3 TIER OPEN
- T. BRAB004: 2 TIER OPEN

SYSTEM CUPBOARDS

- U. BRAS001: 1500 ROLLER DOOR
- V. BRAS002: 1500 HINGE DOOR
- W. BRAS003: 1800 HINGE DOOR
- X. SHEL001: SHELF
- Y. PULL001: PULL OUT CRADLE

FILING CABINETS

- Z. BRAFD01: 4 DRAW
- AA. BRAFD02: 3 DRAW
- AB. BRAFD03: 2 DRAW

MONTÉ

AVAILABLE IN 32MM SOLID EDGE.

DESKS

- A. MOND001: 2000 X 1000 CPU "L" COMBINATION DESK WITH OR WITHOUT INLAY.
- B. MOND002: 2000 X 1000 DOUBLE PEDESTAL DESK WITH OR WITHOUT INLAY.

SYSTEM CUPBOARDS

- C. MONS001: 1500 X 1200 ROLLER DOOR
- D. MONS002: 1500 X 900 HINGE DOOR
- E. MONS003: 1800 X 900 HINGE DOOR
- F. SHELD01: SHELF
- G. PULLD01: PULL OUT CRADLE

FILING CABINET

- H. MONF001: 4 DRAW
- I. MONF002: 3 DRAW
- J. MONF003: 2 DRAW

TELEPHONE COMPANION

- K. MONT001: 600 X 450 WITH HINGE DOOR & OPEN SHELF





EXTENSIONS

- J. VERE001: 1200 X 600 CPU EXTENSION
- K. VERE002: 1000 X 600 OPEN EXTENSION

CREDENZAS

- L. VERC001: 1200 X 600 ROLLER DOOR
- M. VERC002: 1200 X 600 SLIDING DOOR
- N. VERC003: 1000 X 600 SLIDING DOOR

SYSTEM CUPBOARDS

- O. VERS001: 1500 X 1200 ROLLER DOOR
- P. VERS002: 1500 X 900 HINGE DOOR
- Q. VERS003: 1800 X 900 HINGE DOOR
- R. SHELD01: SHELF
- S. PULL001: PULL OUT CRADLE

FILING CABINETS

- T. VERF001: 4 DRAW
- U. VERF002: 3 DRAW
- V. VERF003: 2 DRAW

BOOK CASES

- W. VERB001: 3 TIER TRIPLE GLASS H/D BOOK CASE
- X. VERB002: 3 TIER GLASS H/D BOOK CASE
- Y. VERB003: 3 TIER H/D BOOK CASE
- Z. VERB004: 3 TIER OPEN BOOK CASE
- AA. VERB005: 2 TIER OPEN BOOK CASE

VERSI

AVAILABLE IN 50MM DOUBLE GROOVED SOLID EDGE.

DESKS

- A. VERD001: 2000 X 1000 SHELL
- B. VERD002: 1800 X 900 SHELL
- C. VERD003: 1600 X 900 SHELL

PEDESTALS

- D. VERP001: DESK HEIGHT PEDESTAL 3 DRAW + PIN TRAY CENTRAL LOCKING
- E. VERP002: DESK HEIGHT PEDESTAL 1 DRAW 1 DEEP FILER + PIN TRAY CENTRAL LOCKING
- F. VERP003: MOBILE PEDESTAL 3 DRAW + PIN TRAY CENTRAL LOCKING
- G. VERP004: MOBILE PEDESTAL 1 DRAW 1 DEEP FILER + PIN TRAY CENTRAL LOCK

LINKS

- H. VERL001: 1000 X 600 LINK
- I. VERL002: 900 X 600 LINK



AVAILABLE IN 50MM GROOVED SOLID EDGE WITH FULL INLAY. OPTION 32MM SOLID EDGE.



DESKS

- A. DELDD01: 2500 X 1500 DOUBLE PEDESTAL WITH CONFERENCE END
- B. DELDD02: 2000 X 1000 DOUBLE PEDESTAL

CREDENZA

- C. DELC001: 1800 X 600 COMBINATION CREDENZA
- D. DELC002: 1200 X 600 SLIDING DOOR CREDENZA



CUBÉ

AVAILABLE IN 64MM SOLID EDGE TOP & LEG PANELS. 32MM MODESTY WITH RAISERS.

DESKS

- A. CUB0001: 2000 X 900 SHELL
- B. CUB0002: 1800 X 900 SHELL

EXTENSION

- C. CUBE001: 1200 X 600 OPEN EXTENSION
- D. CUBE002: 1200 X 600 CPU EXTENSION

MOBILE PEDESTALS

- E. CUBM001: 3 DRAW + PIN TRAY CENTRAL LOCKING
- F. CUBM002: 1 DRAW 1 DEEP FILER + PIN TRAY CENTRAL LOCKING

CREDENZAS NO RAISERS

- G. CUBC001: 1200 X 600 ROLLER DOOR
- H. CUBC002: 1200 X 600 SLIDING DOOR
- I. CUBC003: 1200 X 600 HINGE DOOR

PEDENZAS NO RAISERS

- J. CUBP001: 1250 X 600 ROLLER DOOR
- K. CUBP002: 1250 X 600 SLIDING DOOR
- L. CUBP003: 1250 X 600 HINGE DOOR

SYSTEM CUPBOARDS NO RAISERS

- M. CUBS001: 1500 X 1200 ROLLER DOOR
- N. CUBS002: 1500 X 900 HINGE DOOR
- O. CUBS003: 1800 X 900 HINGE DOOR
- P. SHELO01: SHELF
- Q. PULL001: PULL OUT CRADLE



AVAILABLE IN 32MM SOLID EDGE WITH BLOCK LEGS / OPTION ANTIQUE CURVED FOOT.

**SYSTEM CUPBOARDS**

D. DOLB001: 1500 X 900 HINGE DOOR

E. DOLB002: 1800 X 900 HINGE DOOR

F. SHELD01: SHELF

G. PULL001: PULL OUT CRADLE

WALL UNITSH. DOLW001: 2000 X 900 HINGE DOOR
BOTTOM & GLASS HINGE DOOR TOPI. DOLW002: 2000 X 450 4 DRAW BOTTOM
& 1 DOOR TOPJ. DOLW003: 2000 X 900 HINGE DOOR
BOTTOM & OPEN TOP

DOLCÉ

AVAILABLE IN 32MM SOLID EDGE WITH BLOCK LEGS / OPTION ANTIQUE CURVED FOOT.

DESKS

- A. DDL0001: 2000 X 1000 "L" COMBINATION DESK WITH OR WITHOUT INLAY
- B. DDL0002: 2000 X 1000 DOUBLE PEDESTAL DESK WITH OR WITHOUT INLAY

CREDENZA

- C. DDL0001: 1200 X 600 SLIDING DOOR CREDENZA





DESKS

- A. VISD001: 2000 X 1000 SHELL
- B. VISD002: 1800 X 900 SHELL
- C. VISD003: 1600 X 900 SHELL

EXTENSIONS

- D. VISE001: 1200 X 600 OPEN EXTENSION
- E. VISE002: 1200 X 600 CPU EXTENSION

LINKS

- F. VISL001: 1000 X 600 CURVED
- G. VISL002: 900 X 600 CURVED

CREDENZA

- H. VISCO01: 1200 X 600 ROLLER DOOR
- I. VISCO02: 1200 X 600 SLIDING DOOR

CONFERENCE LINK

- J. VISCO03: 1200 DIAMETER
- K. VISCO04: 1100 DIAMETER

MOBILE PEDESTALS

- L. VISMO01: 3 DRAW + PIN TRAY CENTRAL LOCKING
- M. VISMO02: 1 DRAW 1 DEEP FILER + PIN TRAY CENTRAL LOCKING

WALL UNITS

- N. VISWO01: 1/3 GLASS WITH 2/3 HINGE DOOR
- O. VISWO02: 2/3 GLASS WITH 1/3 HINGE DOOR

BOARDROOM TABLES

- P. VISBO01: 1200 ROUND 4 SEATER

NEVARO

AVAILABLE IN 50MM SOLID EDGE / OPTION 32MM FLAT EDGE WITH 16MM BLACK UNDERCARRIAGE

DESKS

A. NEVD001: 2200 X 1200 SHELL

EXTENSION 1400 X 600

B. NEVE001: WITH DESK HEIGHT PEDESTAL

C. NEVE002: WITH ROLLER DOOR CREDENZA

D. NEVE003: WITH ROLLER DOOR PEDENZA

MOBILE PEDESTALS

E. NEVM001: 3 DRAW + PIN TRAY CENTRAL LOCKING

F. NEVM002: 1 DRAW 1 DEEP FILER + PIN TRAY CENTRAL LOCK

SYSTEM CUPBOARDS

G. NEVS001: 1500 X 1200 ROLLER DOOR

H. NEVS002: 1500 X 900 HINGE DOOR

I. NEVS003: 1800 X 900 HINGE DOOR

J. SHELO01: SHELF

K. PULL001: PULL OUT CRADLE



AVAILABLE IN 50MM SOLID EDGE / OPTION 32MM SOLID EDGE.



CREDENZAS

L. NIR001: 1200 X 600 ROLLER DOOR

M. NIR002: 1000 X 600 SLIDING DOOR

PEDENZAS

N. NIR001: 1250 X 600 ROLLER DOOR

O. NIR002: 1250 X 600 SLIDING DOOR

SYSTEM CUPBOARDS

P. NIR001: 1500 X 1200 ROLLER DOOR

Q. NIR002: 1500 X 900 HINGE DOOR

R. NIR003: 1800 X 900 HINGE DOOR

S. SHELD01: SHELF

T. PULL001: PULL OUT CRADLE



NIRO

AVAILABLE IN 50MM SOLID EDGE / OPTION 32MM SOLID EDGE.

DESKS

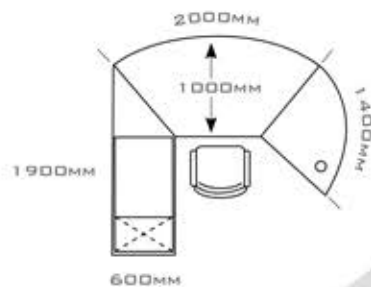
- A. NIRD001: 2000 X 1000 SHELL
- B. NIRD002: 1800 X 1000 SHELL
- C. NIRD003: 1450 X 1000 CONFERENCE LINK

EXTENSION 1900 X 600

- D. NIRE001: OPEN EXTENSION
- E. NIRE002: WITH DESK HEIGHT PEDESTAL
- F. NIRE003: WITH ROLLER DOOR CREDENZA
- G. NIRE004: WITH ROLLER DOOR PEDENZA
- H. NIRE005: WITH SLIDING DOOR CREDENZA
- I. NIRE006: WITH SLIDING DOOR PEDENZA

MOBILE PEDESTALS

- J. NIRM001: 3 DRAW + PIN TRAY CENTRAL LOCKING
- K. NIRM002: 1 DRAW 1 DEEP FILER + PIN TRAY CENTRAL LOCKING





EROS

AVAILABLE IN 32MM FLAT EDGE WITH 16MM BLACK UNDERCARRIAGE / OPTION 32MM X 50MM BEVEL EDGE.

DESKS

- A. ERO0001: 2000 X 1000 WITH INLAY
- B. ERO0002: 2000 X 1000 NO INLAY

OPEN EXTENSIONS

- C. EROE001: 1700 X 600 DROPPED SWIVEL EXTENSION TOP
- D. EROE002: 1700 X 600 FLUSH FITTED EXTENSION TOP

CREDENZAS

- E. EROC001: 1700 X 600 FLUSH FITTED CPU COMPANION
- F. EROC002: 1200 X 600 FREE STANDING CPU COMPANION
- G. EROC003: 2400 X 600 HINGE AND GLASS HINGE DOOR

MOBILE PEDESTALS

- H. EROM001: 3 DRAW + PIN TRAY CENTRAL LOCKING
- I. EROM002: 1 DRAW 1 DEEP FILER + PIN TRAY CENTRAL LOCK

WALL UNIT

- J. ER0W001: 2400 X 600 X 1800 2 DRAW 3 HINGE DOOR & 4 GLASS DOOR

BOARDROOM TABLES

- K. EROB003: 2400 X 1200 RECTANGULAR 8 SEATER
- L. EROB001: 1200 ROUND 4 SEATER



GRANDO

AVAILABLE IN 60MM SOLID EDGE. TOP DRAW HOUSES SAFE.

DESKS

A. GRAD001: 2600 X 1450 DOUBLE PEDESTAL DESK WITH INLAY

WALL UNIT

B. GRAW001: 2000 X 2000 2 HINGE 1 ROLLER DOOR & OPEN GLASS



MAESTRO

AVAILABLE IN 50MM 1/2 ROUND EDGE

DESK

A. MAE0001: 3000 X 2700 WITH ROLLER DOOR PEDENZA

SYSTEM CUPBOARDS

B. MAE0001: 1500 X 1200 ROLLER DOOR

C. MAE0002: 1500 X 900 HINGE DOOR

D. MAE0003: 1800 X 900 HINGE DOOR

E. SHE0001: SHELF

F. PULL001: PULL OUT CRADLE



PALAZZO

AVAILABLE IN 32MM X 50MM BEVEL EDGE / OPTION 3MM FLAT EDGE

DESKS

- A. PALD001: 2200 X 1100 FLAT FRONT OVAL TOP WITH STEEL CAPPED LEG & CPU PEDENZA
- B. PALD002: 2200 X 1100 OVAL TOP WITH STEEL CAPPED LEG & CPU PEDENZA
- C. PALD003: PERFORATED MODESTY OPTIONAL

MOBILE PEDESTALS

- D. PALM001: 3 DRAW + PIN TRAY CENTRAL LOCKING
- E. PALM002: 1 BOX DRAW 1 DEEP FILER + PIN TRAY CENTRAL LOCKING

CREDENZA

- F. PALC001: 1200 X 600 ROLLER DOOR CREDENZA

SYSTEM CUPBOARDS

- G. PALS001: 1500 X 1200 ROLLER DOOR
- H. PALS002: 1500 X 900 HINGE DOOR
- I. PALS003: 1800 X 900 HINGE DOOR
- J. SHELO01: SHELF
- K. PULL001: PULL OUT CRADLE

WALL UNITS

- L. PALW001: 2000 X 900 HINGE DOOR
- M. PALW002: 2000 X 900 1/2 HINGE 1/2 GLASS HINGE DOOR
- N. PALW003: 1200 X 900 HINGE DOOR
- O. PALW004: 1200 X 900 GLASS HINGE DOOR

BOARDROOM TABLES

- P. PALB001: 2400 X 1200 ELIPTICAL 6-8 SEATER



AVAILABLE IN 50MM GROOVED EDGE / OPTION 32MM X 50MM BEVEL EDGE



CREDENZAS

- G. VOLC001: 1200 X 600 ROLLER DOOR
- H. VOLC002: 1200 X 600 SLIDING DOOR

PEDENZAS

- I. VOLP001: 1200 X 600 ROLLER DOOR
- J. VOLP002: 1200 X 600 SLIDING DOOR

SYSTEM CUPBOARDS

- K. VOLS001: 1500 X 1200 ROLLER DOOR
- L. VOLS002: 1500 X 900 HINGE DOOR
- M. VOLS003: 1800 X 900 HINGE DOOR
- N. SHEL001: SHELF
- O. PULL001: PULL OUT CRADLE

WALL UNITS

- P. VOLW001: 2000 X 1800 COMBO HINGE & GLASS HINGE DOOR
- Q. VOLW002: 4 GLASS DOOR TOP UNIT FOR REAR EXTENSION

BOARDROOM TABLES

- R. VOLB001: 1200 ROUND 4 SEATER

VOLANTÉ

AVAILABLE IN 50MM GROOVED EDGE / OPTION 32MM X 50MM BEVEL EDGE

DESKS

A. VOL0001: 2500 X 1200 CONFERENCE TOP

B. VOL0002: 2100 X 900 BULLET TOP

OPEN EXTENTIONS

C. VOLE001: 1200 X 600 SIDE EXTENSION

D. VOLE002: 2000 X 600 REAR EXTENSION

DESK HEIGHT PEDESTALS

E. VOL0003: 4 DRAW + PIN TRAY CENTRAL LOCKING

F. VOL0004: 2 DRAW 1 DEEP FILER + PIN TRAY CENTRAL LOCK



VENEERS & LAMINATES



BLACK OAK
VENEER



EBONY
MAHOGANY
VENEER



STANDARD
MAHOGANY
VENEER



BROWN
MAHOGANY
VENEER



RED
MAHOGANY
VENEER



IMBUIA
VENEER



DARK
CHERRY
VENEER



RED
CHERRY
VENEER



BONDESEE
CHERRY
VENEER



BURBINGA
VENEER



NATURAL
CHERRY
VENEER



NATURAL OAK
VENEER



MAPLE
VENEER



WHITE
BEECH
VENEER



BURGAN
MAHOGANY
LAMINATE



ROYAL
MAHOGANY
LAMINATE



WINDSOR
CHERRY
LAMINATE



BONDESEE
CHERRY
LAMINATE



NATURAL OAK
LAMINATE



BAVARIAN
BEECH
LAMINATE



VANCOUVER MAPLE
LAMINATE